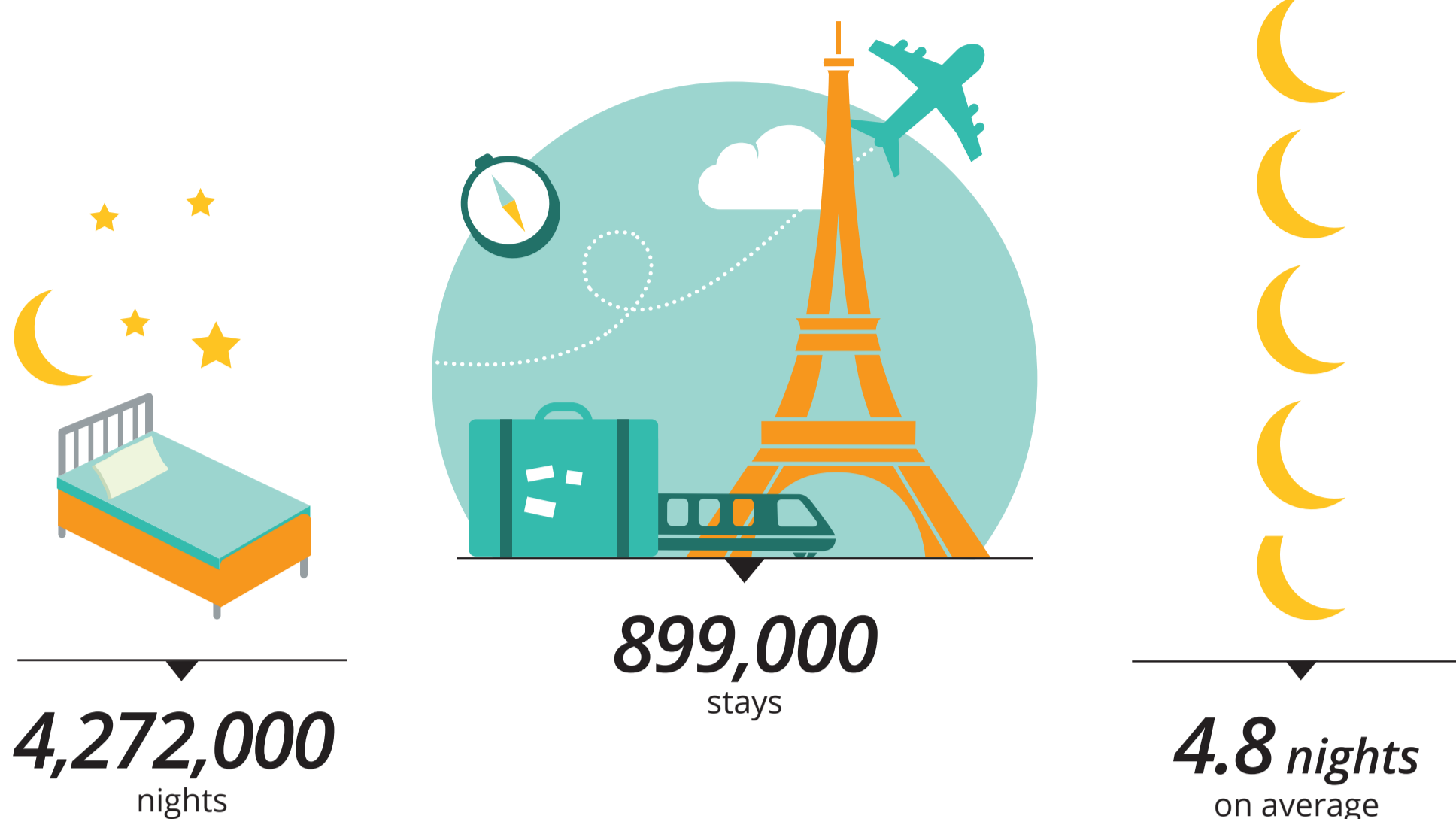


# THE SPANISH IN PARIS REGION

## OCCUPANCY



59 %

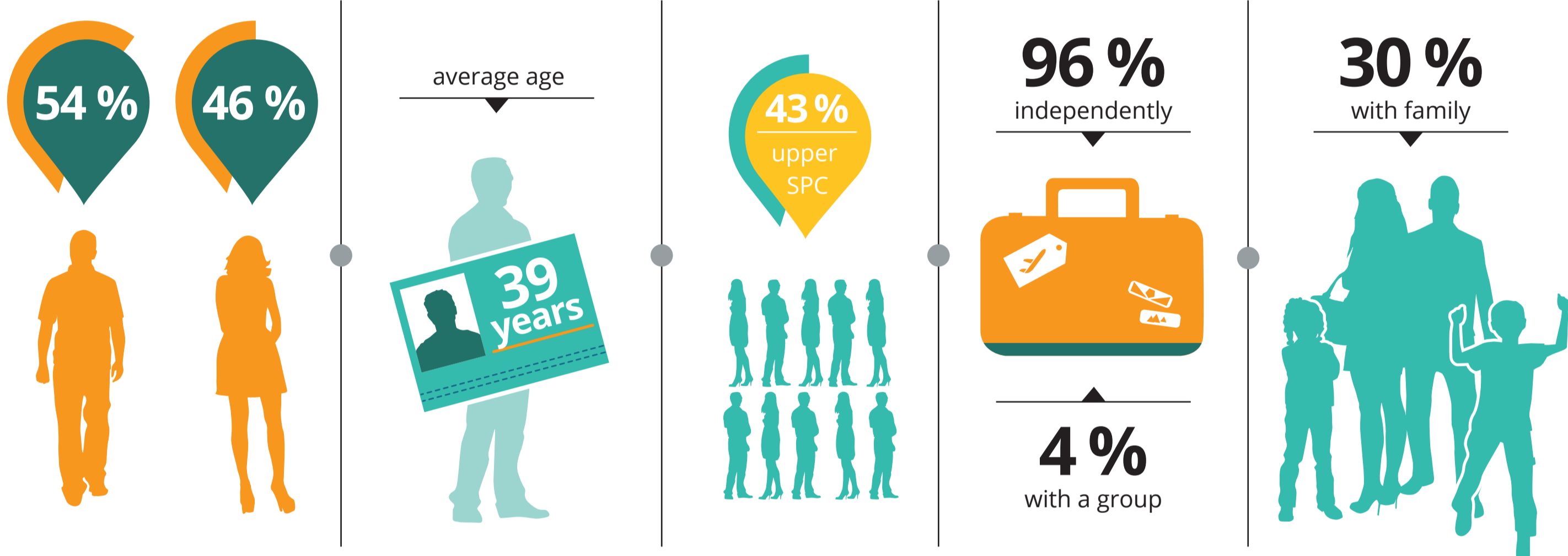
REPEAT VISITORS

AND

41 %

FIRST-TIME VISITORS

## PROFILE



70 %

PERSONAL STAYS

## ACCOMMODATION

### ACCOMMODATION BOOKINGS

42 %

through TRAVEL AGENTS AND TOUR OPERATORS



15 % non-commercial

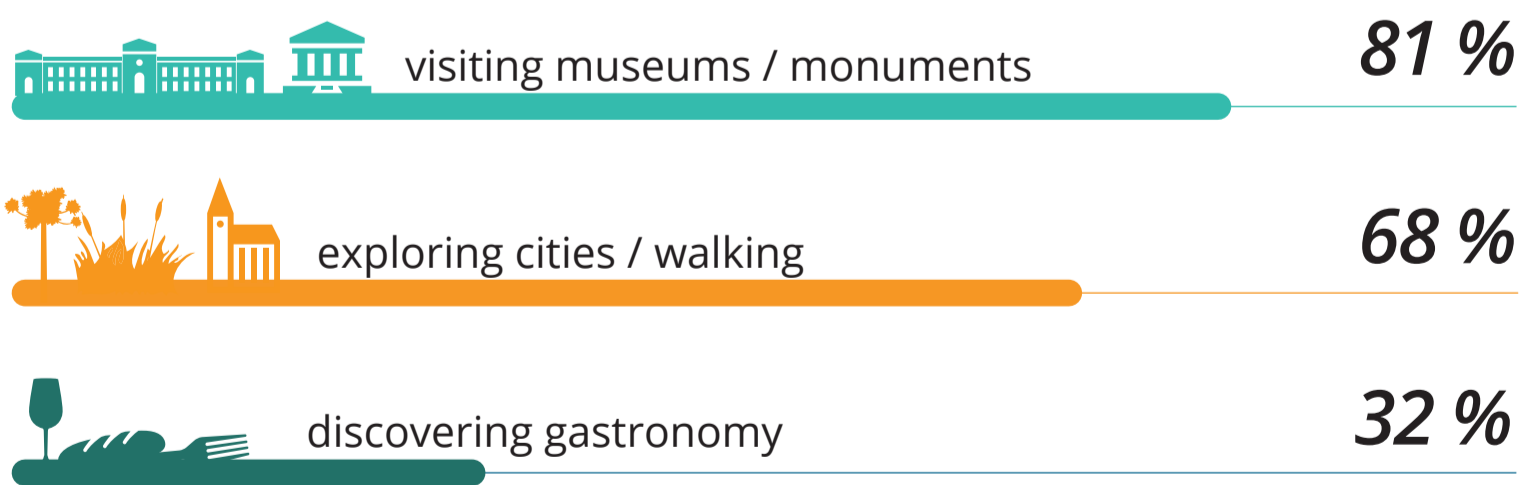


77 % hotels

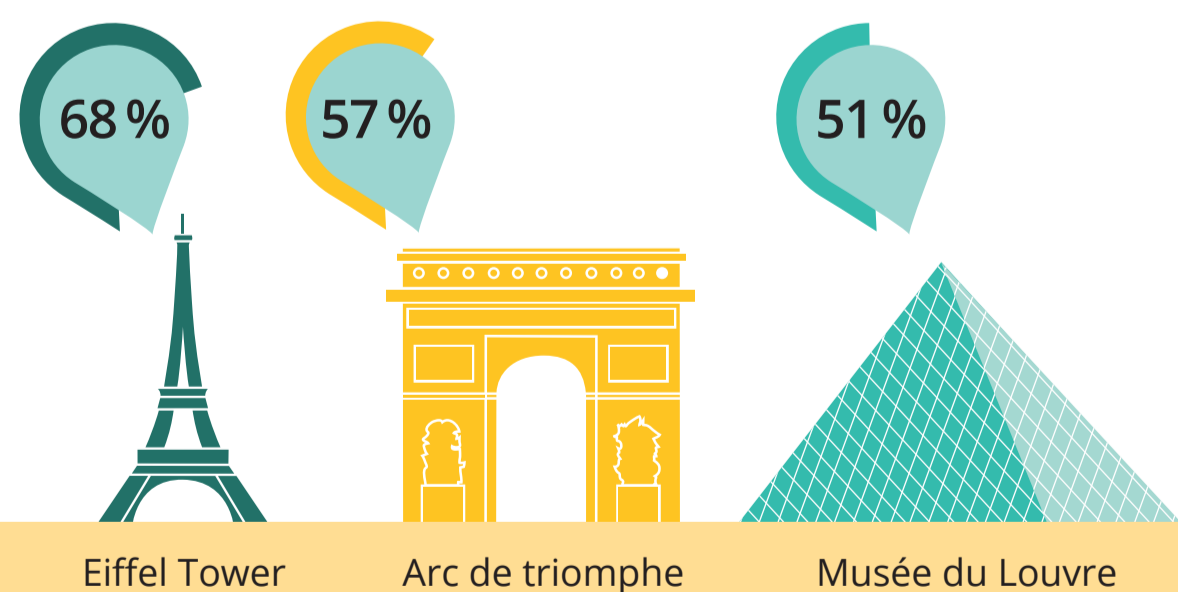


8 % other commercial

## TOP 3 ACTIVITIES



## TOP 3 SITES VISITED



## EXPENDITURE



€ 128 average spend per day and per person

## SATISFACTION/RECOMMENDATION/REVISIT

