

Tourism activity's assessment in Paris Region

First half of 2022
and summer season results

Estimated tourist attendance for the first half of 2022

~18,2 million tourist arrivals



-5.4 million compared to 2019 (-23%) and +12.5 million compared to 2021 (+218%)

~7 billion € of tourism consumption



-3 billion compared to 2019 (-30%) and +5 billion compared to 2021 (+277%)

Source : estimates of Paris Île-de-France tourism dashboard (provisional data).

~12,6 million

of French and international tourists
from June to August 2022

-6% compared to June-August 2019






* estimates.

** Calculates from hotel arrivals. International client base.

Source : Paris Île-de-France tourism dashboard .

Estimated summer tourist attendance*

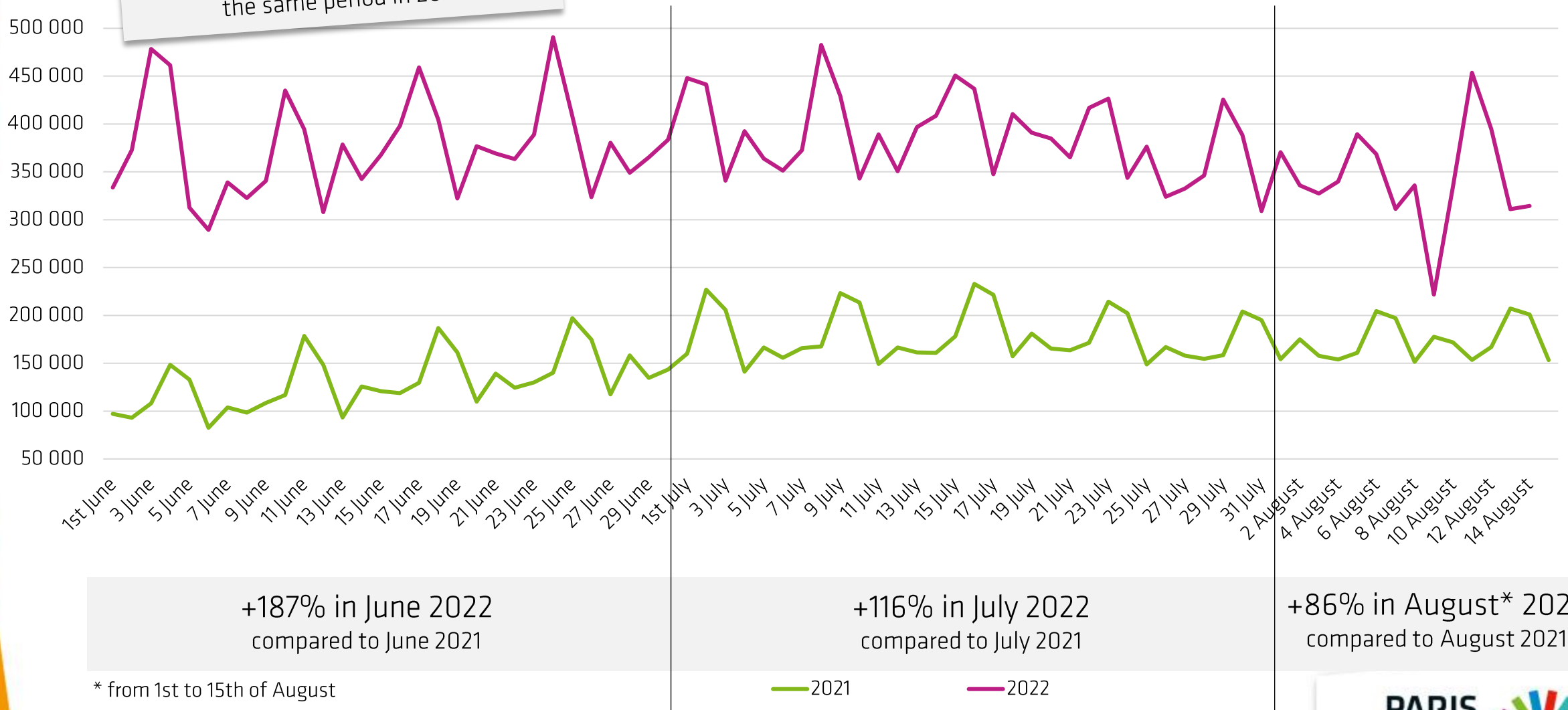
Main nationalities

Market share**			Variation from June-July 2022 to June-July 2019**
20%		United States	-7%
10%		United Kingdom	0%
8%		Spain	+8%
8%		Germany	+1%
6%		Italy	+33%

+133%

during the summer period compared to the same period in 2021

Evolution of tourist nights during the summer period



+187% in June 2022
compared to June 2021

+116% in July 2022
compared to July 2021

+86% in August* 2022
compared to August 2021

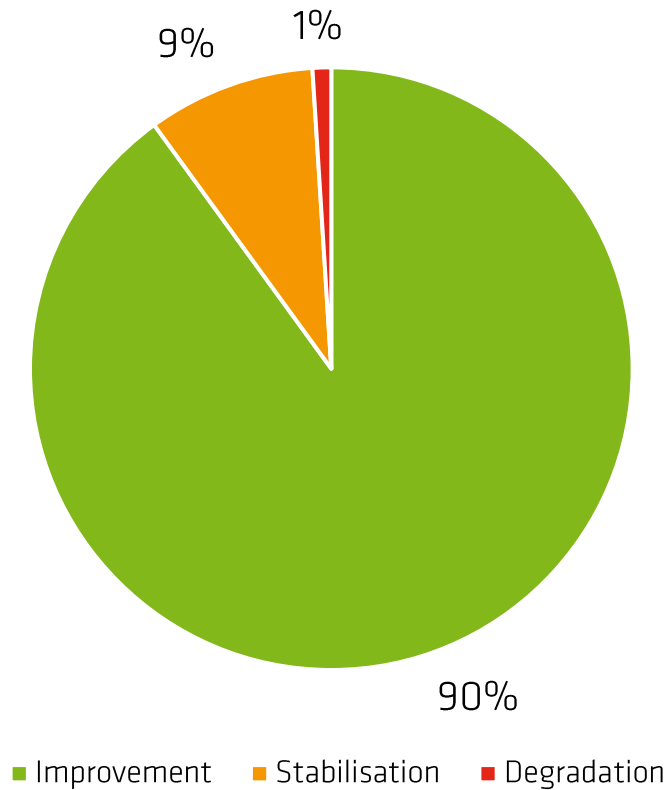
* from 1st to 15th of August

Source : Flux Vision - Orange Business Services.

Forecast of tourism activity

Sentiment of tourism professionals towards tourism activity

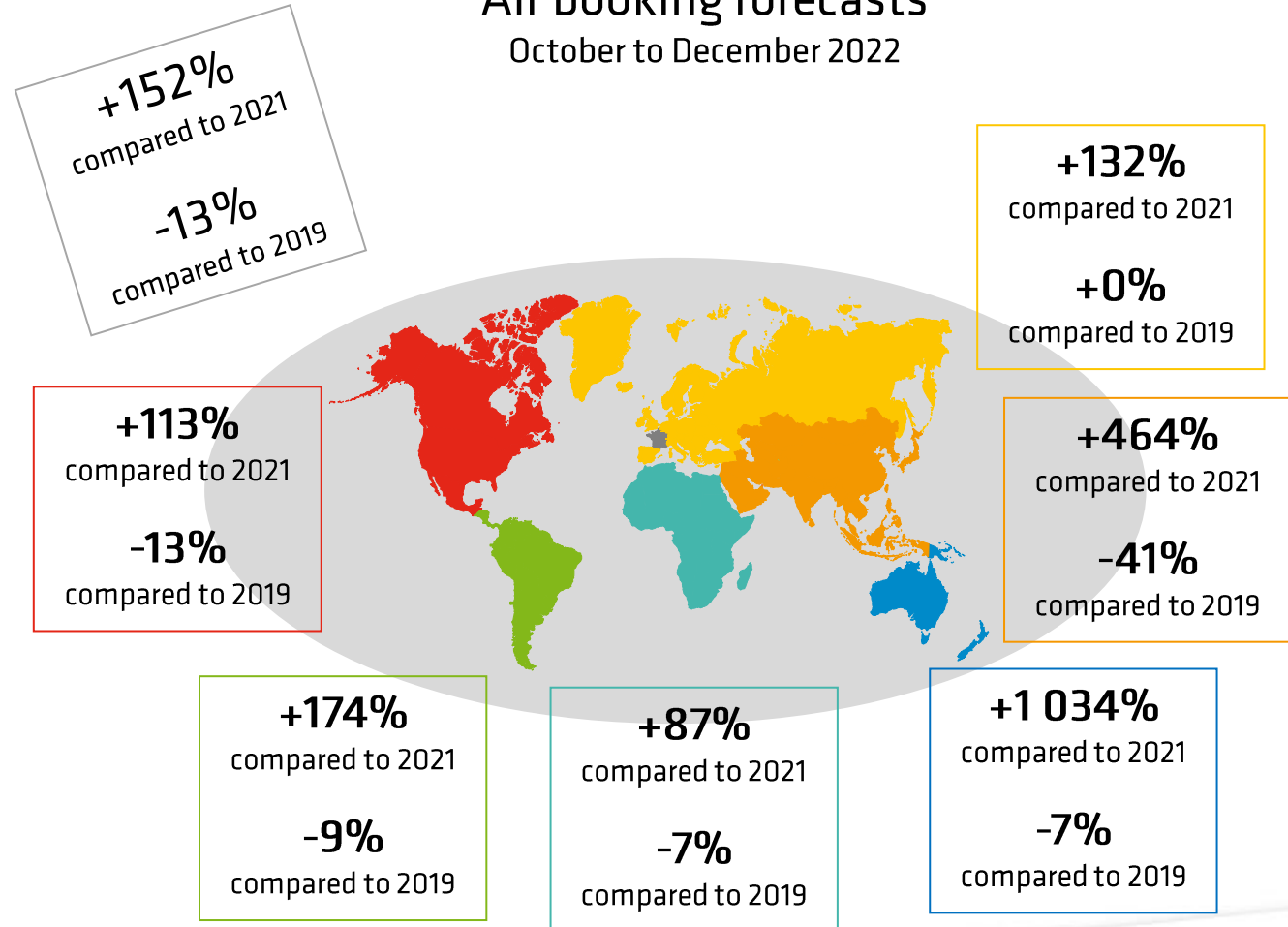
Medium-term forecasts



Source : Paris Île-de-France tourism dashboard - ForwardKeys.

Air booking forecasts

October to December 2022



Attendance at museums and monuments in Ile-de-France

from January to June 2022 *

	Attendance 2022	Change 22/21	Change 22/19
Musée du Louvre	3 318 447	790 %	- 31 %
Domaine de Versailles (1)	2 900 000	866 %	-22 %
Tour Eiffel	2 506 942	Nd	- 9 %
Musée d'Orsay	1 286 413	822%	- 27 %
Cité des sciences et de l'industrie	882 584	719 %	- 30 %
Arc de triomphe	772 994	1 080%	0 %
Petit Palais – Musée des Beaux-Arts de la ville de Paris	549 721	1 104 %	13 %
Musée Carnavalet – Histoire de Paris	507 224	475 %	Nd
Atelier des Lumières	468 200	261 %	- 30 %
Musée de l'Orangerie	465 948	919 %	- 18 %
Catacombes de Paris	270 825	1 036 %	- 12 %

*Non-exhaustive list

Considering the context (closing periods, variable capacity, ban on hosting groups), the variations are provided as an indication.

(1) Entrance to the castle, the Grand Trianon, the Petit Trianon and the shows.

Sources : museums and monuments.

For more information :
etudes-observation@visitparisregion.com

Find us on



Visitparisregion



VisitParisIdf



VisitParisRegion



VisitParisRegion



巴黎大区旅游



巴黎大区旅游委员会

www.visitparisregion.com